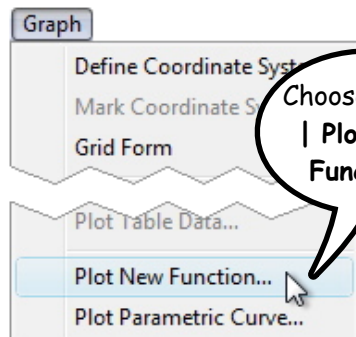


Plotting Functions

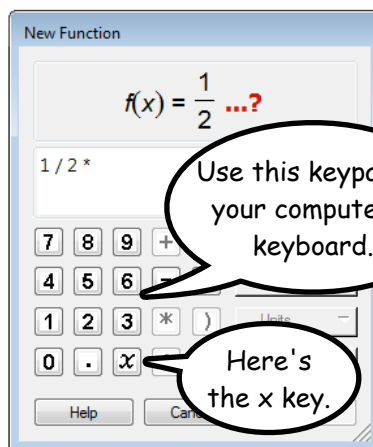
Plot a function using Graph | Plot New Function.

©2009 Key Curriculum Press

Plot a New Function

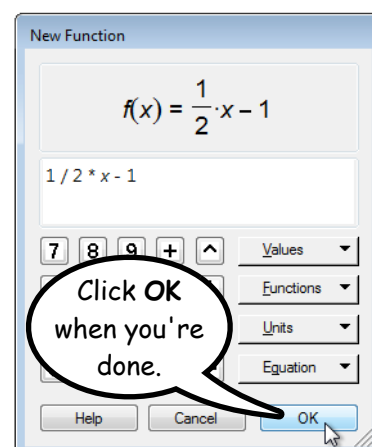


Choose **Graph**
| **Plot New**
Function.



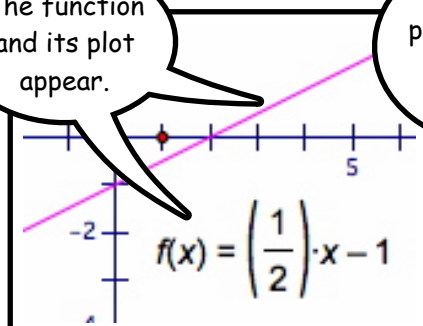
Use this keypad or
your computer's
keyboard.

Here's
the x key.

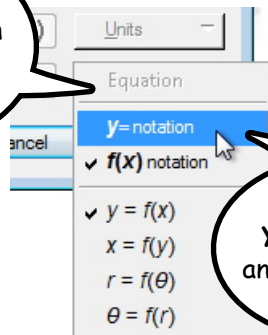


Click **OK**
when you're
done.

The function
and its plot
appear.

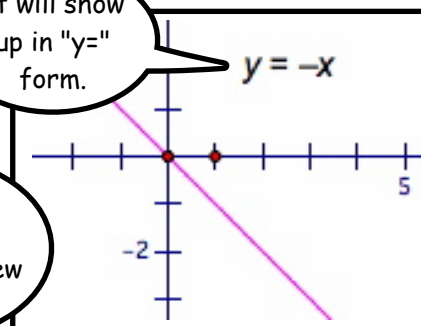


You can also
press **Equation**
in the
Calculator...



choose
y = notation,
and enter a new
equation.

It will show
up in "y="
form.

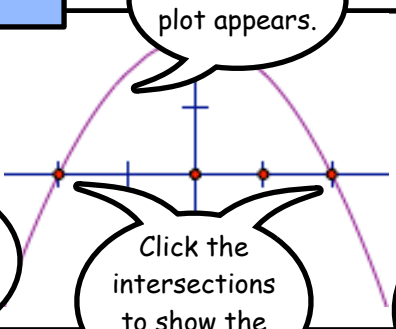


Plot an Existing Function

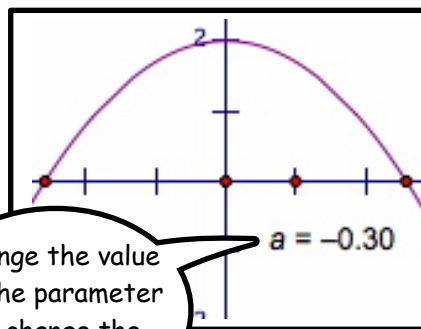
$a = -0.50$
 $f(x) = a \cdot x^2 + 2$

Select a
function
and...

choose **Graph**
| **Plot**
Function.



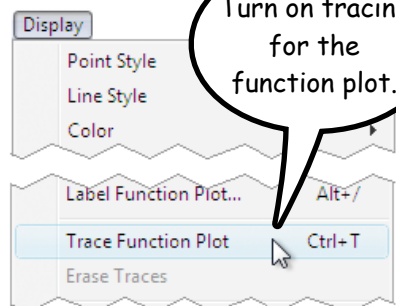
Click the
intersections
to show the
roots.



Trace a Family of Functions

$a = -1.00$
 $f(x) = a \cdot x^2$

Use a parameter
or slider to define
your function.



Turn on tracing
for the
function plot.

